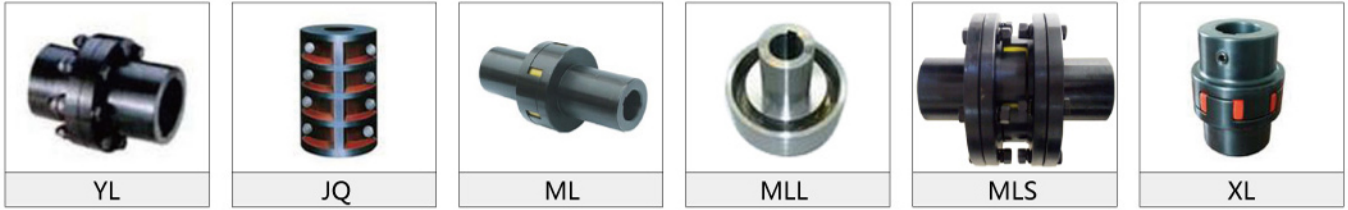




上海松铭传动机械有限公司
SHANGHAI SONGMING TRANSMISSION MACHINERY CO.,LTD



联轴器系列

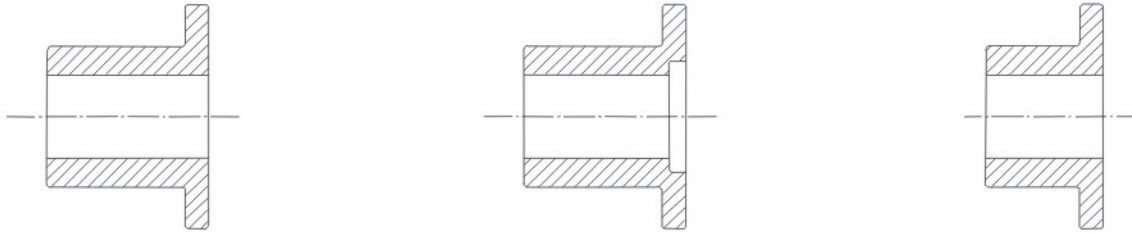


联轴器系列



常用联轴器孔和键槽形式 Mode of hole and key way form of normal couplings

◇ 摘自GB/T3852-1997 《联轴器轴孔和联结型式及尺寸》
The model and marks from GB/T3852-1997 《sizes mode of hole and connecting of coupling》



1、Y型长圆柱形轴孔
(限于长圆柱形轴伸电机端)
1. Y type long ring shaft hole
(Only apply for electrical machine
ends of long open ring shaft)

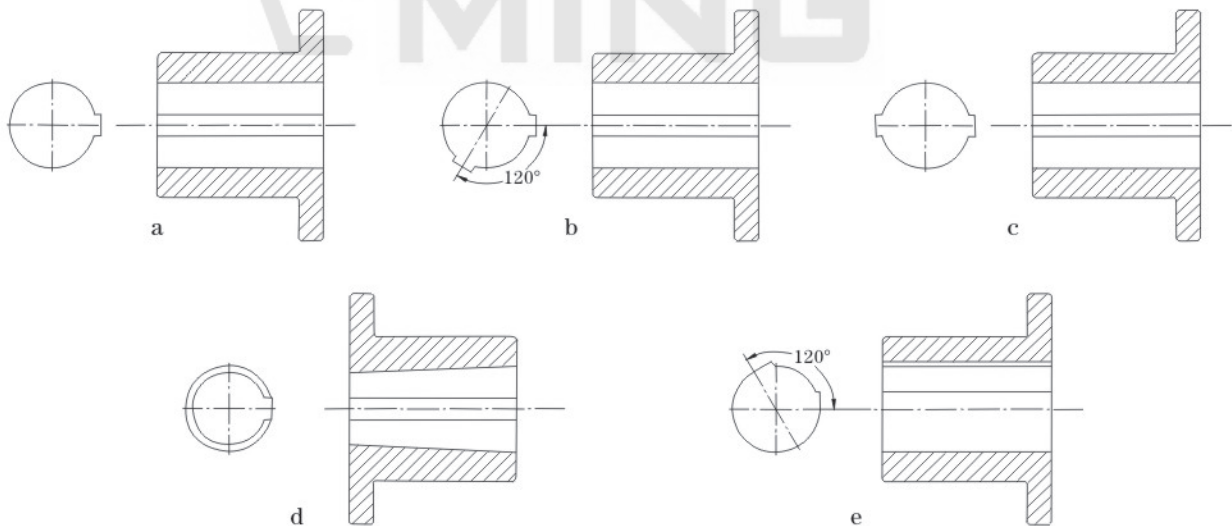
2、J型有沉孔的短圆柱形轴孔
(推荐选用)
2. J type cylindrical shaft hole
with counterbore(commending)

3、J1型无沉孔的短圆柱形轴孔
(推荐选用)
3. J1 type short cylindrical shaft
hole without counterbore
(commending)



4、Z型有沉孔的圆锥形轴孔
4. Z type coniform shaft hole with counterbore

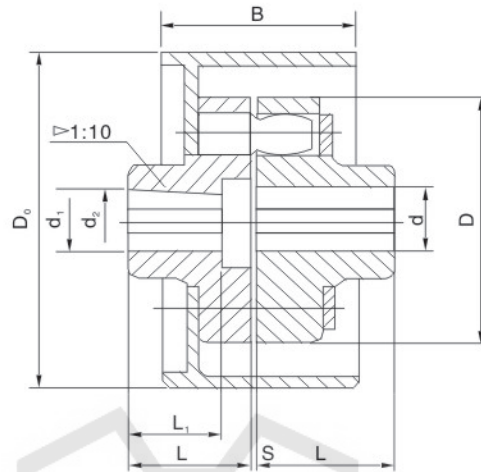
5、Z1型无沉孔的圆锥形轴孔
5. Z1 type coniform shaft hole without counterbore



键槽形式keyway modes

(a)A型平键单键槽； (b)B型120° 布置平键双键槽； (c)B1型布置平键双键槽； (d)C型圆锥形孔平键单键槽； (e)D型普通切向键键槽。
a. A type even single keyway b. B type even double keyway with 120° display C. B1 type even double keyway
d. C type even single keyway with conic hole e. D type normal keyway with tangential key

LXZ (HLL) 型带制动轮弹性柱销联轴器 (GB/T5014-2003)
LXZ(HLL) Type flexible coupling (with brake wheel) II



◇ LXZ型带制动轮弹性柱销联轴器主要参数与尺寸
LXZ Type coupling Main parameters

mm

新型号 Type	旧型号	公称转矩 T_n N·m	许用转速 [n] r/min	轴孔直径 d_1, d_2, dz	轴孔长度		尺寸				转动惯量 $kg \cdot m^2$	重量 kg
					Y, J, J ₁ , Z型		D_0	D	B	S		
					L_1	L						
LXZ1	HLL1	560	5600	20~35	38~82	200	120	85	2.5	2.18	11	
LXZ2	HLL2	1250	3750	30~48	60~112	200	160	85	2.5	2.45	14	
LXZ3	HLL3	1250	2430	30~48	60~112	315	160	132	2.5	13.08	25	
LXZ4	HLL4	2500	2430	40~63	84~142	315	195	132	3	16.6	40	
LXZ5	HLL5	2500	1900	40~63	84~142	400	195	168	3	49.2	59	
LXZ6	HLL6	3150	1900	50~75	84~142	400	220	168	3	57.6	69	
LXZ7	HLL7	3150	1500	50~75	84~142	500	220	210	3	127.4	91	
LXZ8	HLL8	6300	1900	60~85	107~172	400	280	168	4	161.7	88	
LXZ9	HLL9	6300	1900	60~85	107~172	500	280	210	4	129.2	113	
LXZ10	HLL10	11200	1500	70~110	107~212	500	320	210	4	156	156	
LXZ11	HLL11	11200	1220	70~110	107~212	630	320	265	4	314	187	
LXZ12	HLL12	16000	1220	80~125	132~212	630	360	265	5	328	326	
LXZ13	HLL13	22400	1080	100~140	167~252	710	410	298	5	713	337	
LXZ14	HLL14	35500	1080	110~180	167~302	710	480	298	6	849	458	
LXZ15	HLL15	35500	950	110~180	167~302	800	480	335	6	1231	504	

注: LXZ12、LXZ13、LXZ14使用Z型孔时要核对沉孔是否允许。
Note: LXZ12, LXZ13, LXZ14 when using Z hole, counter bore is allowed to check.